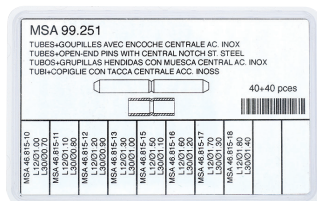
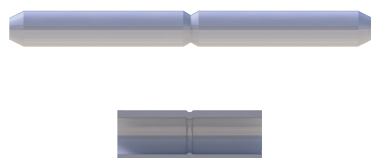


10 pcs

MSA	Tube/Tube L x Ø mm	Goupille/Pin L x Ø mm	Kg
MSA46.815-10	12 x 1.00	30 x 0.70	0.003
MSA46.815-11	12 x 1.10	30 x 0.80	0.003
MSA46.815-12	12 x 1.20	30 x 0.90	0.003
MSA46.815-13	12 x 1.30	30 x 1.00	0.003
MSA46.815-15	12 x 1.50	30 x 1.10	0.003
MSA46.815-16	12 x 1.60	30 x 1.20	0.003
MSA46.815-17	12 x 1.70	30 x 1.30	0.003
MSA46.815-18	12 x 1.80	30 x 1.40	0.003

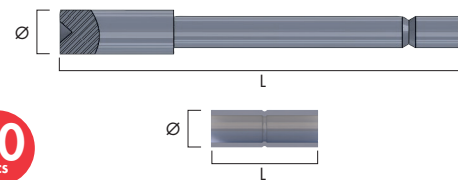
Tube et goupille avec **encoche centrale** ; acier inoxydable.
 Tube and pin with **central notch** ; stainless steel.
 Rohr und Stift mit **zentraler Kerbe** ; Edelstahl.
 Tubo y grupilla con **muesca central** ; acero inoxidable.
 Tubo e copiglia con **tacca centrale** ; acciaio inossidabile.
 Tubo e cavilha com **entalhe central** ; aço inoxidável.



Assortiment de tubes et goupilles avec **encoche centrale** ; acier inoxydable.
 Assortment of tubes and pins with **central notch** ; stainless steel.
 Sortiment von Röhre und Stiften mit **zentraler Kerbe** ; Edelstahl.
 Surtido de tubos y grupillas con **muesca central** ; acero inoxidable.
 Assortimento di tubi e copiglie con **tacca centrale** ; acciaio inossidabile.
 Sortido de tubos e cavilhas com **entalhe central** ; aço inoxidável.

MSA	Qt.	Kg
99.251	40x + 40x	0.040

Contenu - Contents - Inhalt - Contenido - Contenuto - Conteúdo :
8 modèles - models - Modelle - modelos - modelli - modelos
5x MSA46.815-10 /-11 /-12 /-13 /-15 /-16 /-17 /-18

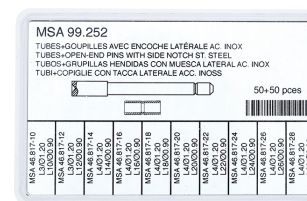
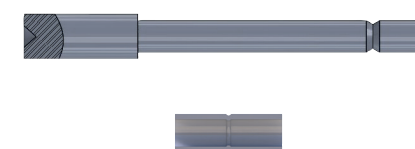


10 pcs

MSA	Tube/Tube L x Ø mm	Goupille/Pin L x Ø mm	Kg
46.817-08	3 x 1.20	8 x 0.90	0.004
46.817-09	3 x 1.20	9 x 0.90	0.004
46.817-10	3 x 1.20	10 x 0.90	0.004
46.817-11	3 x 1.20	11 x 0.90	0.004
46.817-12	3 x 1.20	12 x 0.90	0.004
46.817-13	3 x 1.20	13 x 0.90	0.004
46.817-14	4 x 1.20	14 x 0.90	0.004
46.817-15	4 x 1.20	15 x 0.90	0.004
46.817-16	4 x 1.20	16 x 0.90	0.004
46.817-17	4 x 1.20	17 x 0.90	0.004
46.817-18	4 x 1.20	18 x 0.90	0.004
46.817-19	4 x 1.20	19 x 0.90	0.004
46.817-20	4 x 1.20	20 x 0.90	0.004

Tube et goupille avec **encoche latérale** ; acier inoxydable.
 Tube and pin with **side notch** ; stainless steel.
 Rohr und Stift mit **seiten Kerbe** ; Edelstahl.
 Tubo y grupilla con **muesca lateral** ; acero inoxidable.
 Tubo e copiglia con **tacca laterale** ; acciaio inossidabile.
 Tubo e cavilha com **entalhe lateral** ; aço inoxidável.

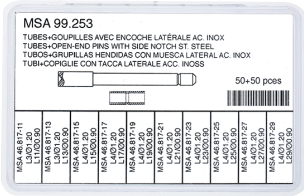
MSA	Tube/Tube L x Ø mm	Goupille/Pin L x Ø mm	Kg
46.817-21	4 x 1.20	21 x 0.90	0.004
46.817-22	4 x 1.20	22 x 0.90	0.004
46.817-23	4 x 1.20	23 x 0.90	0.004
46.817-24	4 x 1.20	24 x 0.90	0.004
46.817-25	4 x 1.20	25 x 0.90	0.004
46.817-26	4 x 1.20	26 x 0.90	0.004
46.817-27	4 x 1.20	27 x 0.90	0.004
46.817-28	4 x 1.20	28 x 0.90	0.004
46.817-29	4 x 1.20	29 x 0.90	0.004
46.817-30	4 x 1.20	30 x 0.90	0.004



Assortiment de tubes et goupilles avec **encoche latérale** ; acier inoxydable.
 Assortment of tubes and pins with **side notch** ; stainless steel.
 Sortiment von Röhre und Stiften mit **seiten Kerbe** ; Edelstahl.
 Surtido de tubos y grupillas con **muesca lateral** ; acero inoxidable.
 Assortimento di tubi e copiglie con **tacca laterale** ; acciaio inossidabile.
 Sortido de tubos e cavilhas com **entalhe lateral** ; aço inoxidável.

MSA	Qt.	Kg
99.252	50x + 50x	0.050

Contenu - Contents - Inhalt - Contenido - Contenuto - Conteúdo :
10 modèles - models - Modelle - modelos - modelli - modelos
5x MSA46.817-10 /-12 /-14 /-16 /-18 /-20 /-22 /-24 /-26 /-28



Assortiment de tubes et goupilles avec **encoche latérale** ; acier inoxydable.

Assortment of tubes and pins with **side notch** ; stainless steel.

Sortiment von Röhre und Stiften mit **seiten Kerbe** ; Edelstahl.

Sortido de tubos y grupillas con **muesca lateral** ; acero inoxidable.

Assortimento di tubi e copiglie con **tacca laterale** ; acciaio inossidabile.

Sortido de tubos e cavilhas com **entalhe lateral** ; aço inoxidável.

MSA	Qt.	Kg
99.253	50x + 50x	0.050

**Contenu - Contents - Inhalt - Contenido - Contenuto - Conteúdo :
10 modèles - models - Modelle - modelos - modelli - modelos
5x MSA46.817-11 /-13 /-15 /-17 /-19 /-21 /-23 /-25 /-27 /-29**